

Cartoon Characters!



Lesson Plan

Description

Drawing cartoon characters often requires students to approach their artwork with a graphite sketch emphasizing basic shapes. This lesson teaches students the fundamentals of drawing and how to draw cartoons using graphite.

LEVEL

Beginner

AREAS OF STUDY

Portrait Graphite Shape

COLLECTIONS

Sketching to Shading



Lesson Objectives

- ✓ Students will be introduced to the graphite medium.
- ✓ Students will learn how to sketch using graphite.
- ✓ Students will understand the importance of sketching with basic shapes.
- ✓ Students will gain an understanding of how to create cartoon characters using graphite and drawing processes.

Teaching Strategies

- Present cartoon characters followed by a discussion on how they are created.
- Instruct students how to draw the basic shapes of cartoon characters' body parts and turn those basic shapes into completed designs.
- Provide an opportunity for students to plan their cartoon's design.
- Guide students to complete their cartoon character drawings.

Time Requirements

TEACHER PREP TIME

10 minutes

DEMONSTRATION TIME

20 minutes

STUDENT STUDIO TIME

1 hours and 30 minutes

Supplies and Materials

- 8.5" x 11" white sheets of paper (3/ student)
- Class set of graphite pencils
- Class set of erasers
- Presentation board for instruction

Steps

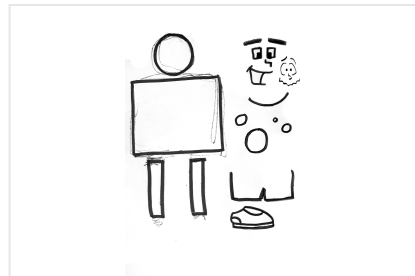
1 Practice Shapes

Practice drawing a variety of basic shapes in different sizes that could be used to represent body parts of a cartoon character.



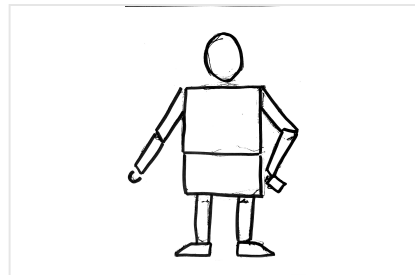
2 Brainstorm

Brainstorm a cartoon character's features using the Cartoon Character Bank. Think about what shapes to use for the cartoon character's head, torso, legs, and arms. Consider what type of facial features, clothes and accessories the cartoon character will have.



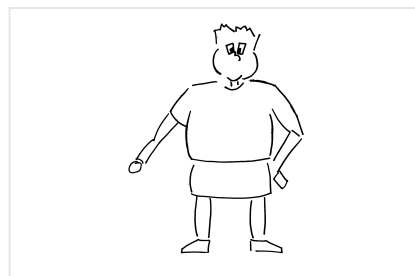
3 Sketch

Begin to form a unique character using the chosen basic shapes. Make decisions on the cartoon's body gestures.



4 Add Features

Add desired cartoon character features on top of the basic shapes using darker graphite lines.



Steps Continued

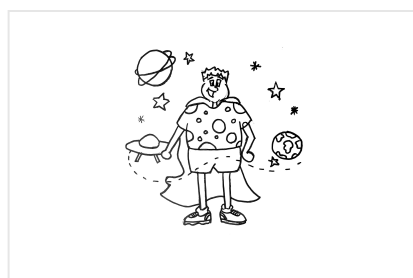
5 Refine

Complete the final sketch by adding more details and erasing any unnecessary lines.



6 Add Context

Use basic shapes to create a background for the cartoon character. Is the character in the forest, a busy downtown street, a classroom, outer space, or the desert? Where are they?



National Standards



CREATING

VA:Cr1.2.1a Use observation and investigation in preparation for making a work of art.

VA:Cr2.1.1a Explore uses of materials and tools to create works of art or design.