

# Sea Life Doodles

## Lesson Plan

### Description

Graphite can be used to explore drawing with creativity and abstraction. This lesson involves enhancing students' use of graphite by allowing them to explore shapes, patterns, lines, and rhythm through creative doodling in a sea life composition.

### LEVEL

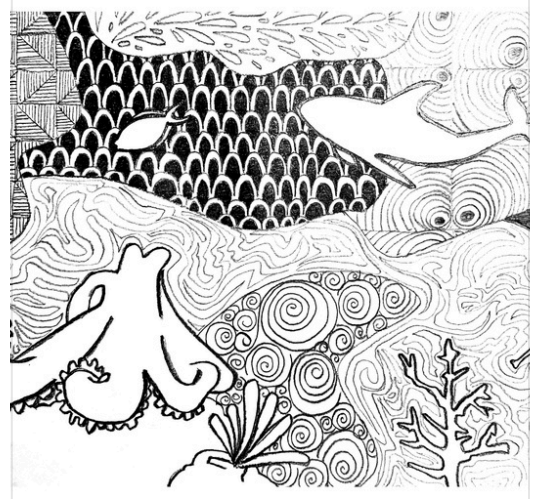
Beginner

### AREAS OF STUDY

Nature Graphite Pattern Line

### COLLECTIONS

Sketching to Shading



### Lesson Objectives

- ✓ Students will understand the elements of art and principles of design: shapes, patterns, lines, value, and rhythm.
- ✓ Students will apply the elements of art using graphite.
- ✓ Students will create a sea life composition using the elements of art, graphite, and creative doodle patterns.

### Teaching Strategies

- Present students with examples of doodle patterns and allow them to practice.
- Review and emphasize the use of a variety of shapes, patterns, lines, value, and rhythm.
- Guide students as they draw sea creature outlines of their choosing.
- Demonstrate how to fill the space around the outlines with their doodle patterns, minimizing negative space.

### Time Requirements

#### TEACHER PREP TIME

10 minutes

#### DEMONSTRATION TIME

30 minutes

#### STUDENT STUDIO TIME

3 hours and 20 minutes

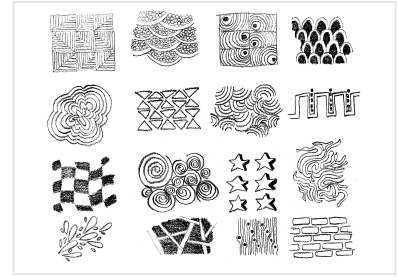
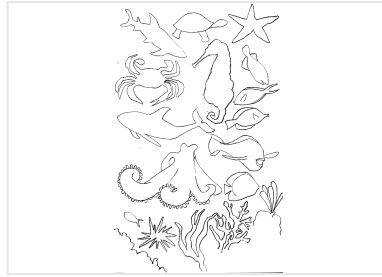
### Supplies and Materials

- Class set of graphite pencils
- Class set of erasers
- 5" x 10" white sheets of paper
- Presentation board for instruction

# Steps

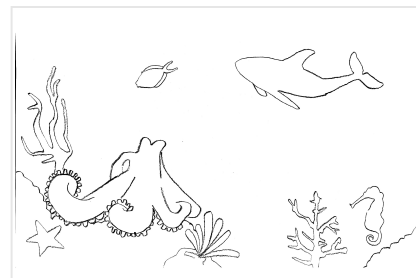
## 1 Practice Doodling

Practice creative doodling.



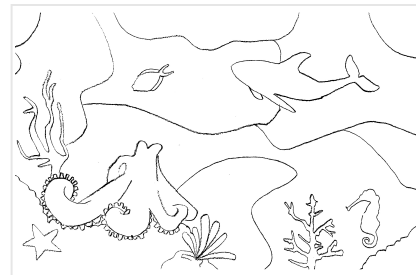
## 2 Draw Sea Life

Draw sea life creatures onto the final composition paper. Only draw the outlines of your sea creatures. Use Sea Life References.



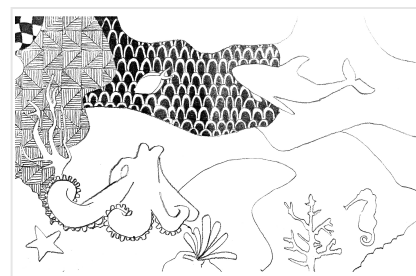
## 3 Divide into Sections

Separate the sea life composition into at least seven sections using wavy lines.



## 4 Apply Patterns

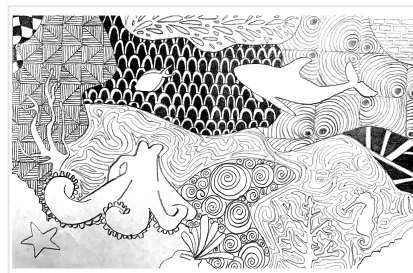
Select at least seven patterns that will fill in each section. Add doodling in each section with the chosen patterns. Leave the sea creatures empty.



## Steps Continued

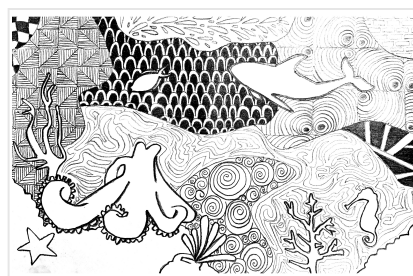
### 5 Fill Each Section

Completely fill in every section with a creative doodle pattern.



### 6 Darken Outline and Add Final Details

Finish the final doodle composition by darkening the outline of your sea creature shapes.



# National Standards

## CREATING

- [VA:Cr1.1.3a](#) Elaborate on an imaginative idea.
- [VA:Cr2.1.4a](#) Explore and invent art-making techniques and approaches.
- [VA:Cr1.1.5a](#) Combine ideas to generate an innovative idea for art-making.